

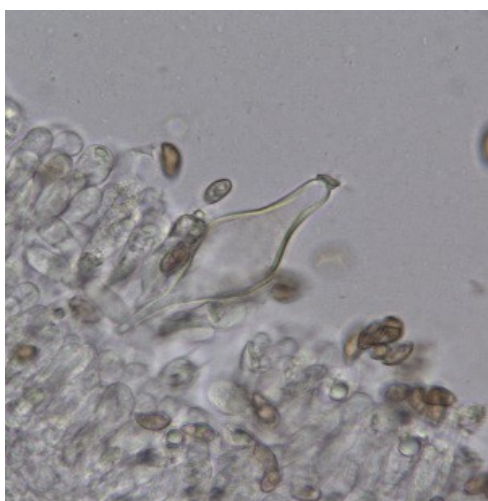
*Inocybe whitei*, Thrunton Woods, 19<sup>th</sup> Sept 2015



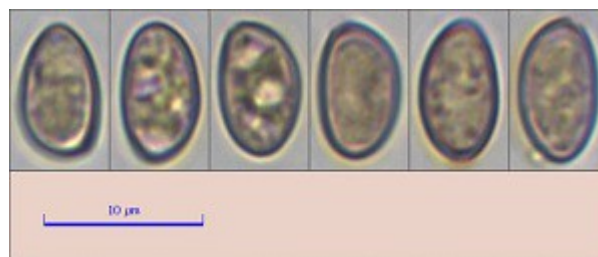
*Inocybe whitei*, soon after picking



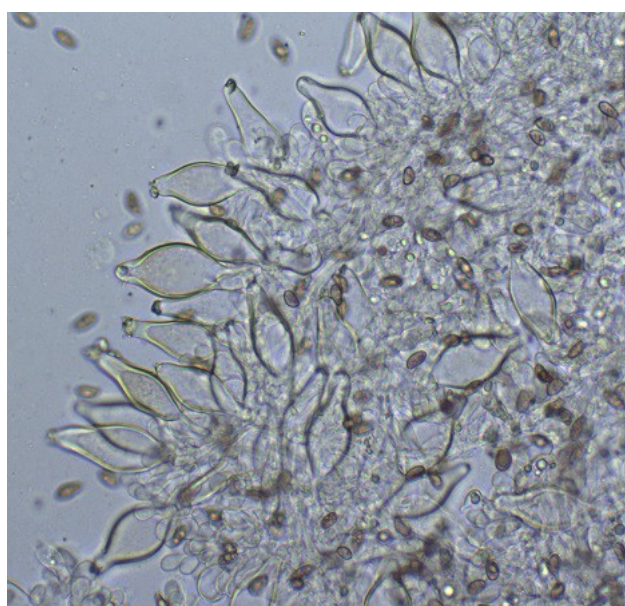
*Inocybe whitei*, 12 hours post-picking showing reddening



*Pleurocystidia* x 600



$Me = 8.7 \times 5.1 \mu m$  ;  $Qe = 1.7$



*Cheilocystidia* x 400