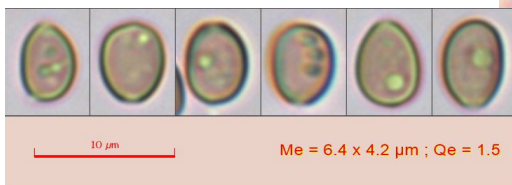




Cap: 3 mm . Orange brown, finely tomentose. Stem: 2mm



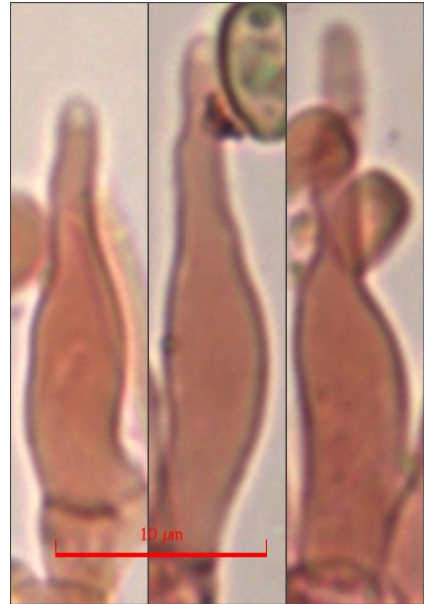
Gills adnate with intermediates. Pale brown with whitish edge. Stipe dark with white hairs. Woolly at base.



Spores with germ pore

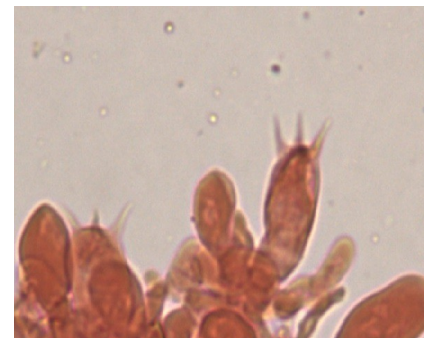


Encrusted hyphae in PP

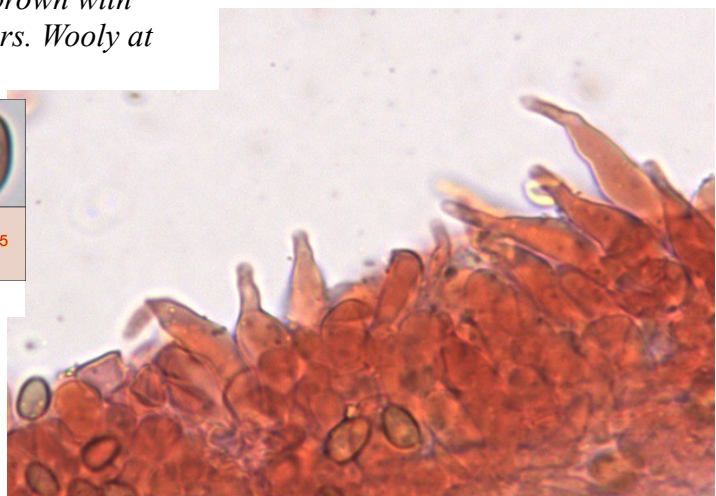


Me = 22.5 x 4.8 µm ; Qe = 4.7

*Cheilocystidia langeniform.*



Basidia with 3 and 4 sterigmata



*Cheilocystidia in situ*